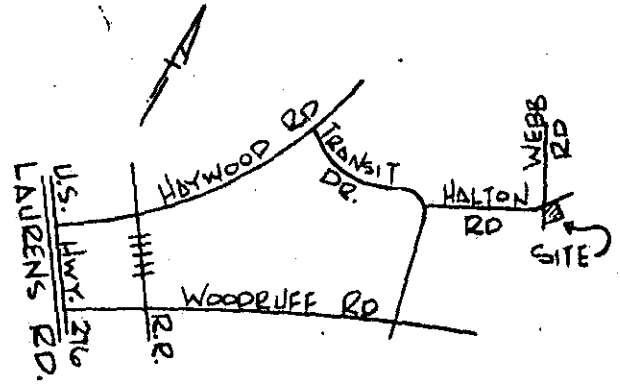
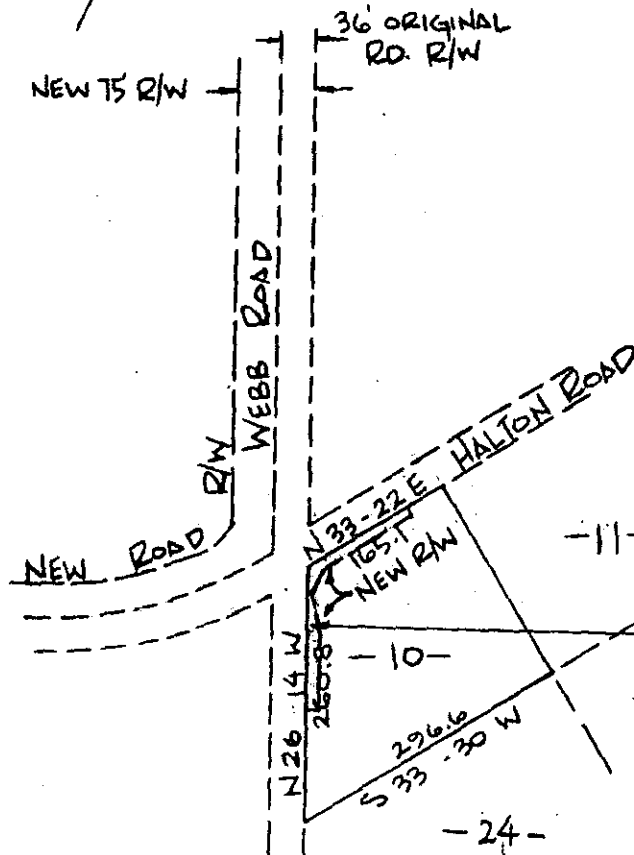


BB# 260-1-8K

FILED
GREENVILLE CO. S. C.
AUG 20 11 21 AM '82
DONNIE S. TANKERSLEY
R.M.C.



LOCATION MAP



EDNA S. GUEST
WILL - 852 @ 24
DEED 415 @ 108 - PLAT 0-103 LOT # 10
2,200 Sq. Ft. or .050 AC. ±

AUG 20 1982

4339

9E-47 ✓

PLAT FOR
CITY OF GREENVILLE
HALTON ROAD-WEBB ROAD IMPROVEMENTS
SHOWING OWNERSHIP & AREA IN NEW R/W
GREENVILLE, S.C.
SCALE 1" = 200' AUGUST 4, 1981



COMPILED FROM EXISTING
DEEDS, PLATS & R/W DNGS.

James D. [Signature]
R.L.S. 3320

PIEDMONT ENGINEERS - ARCHITECTS - PLANNERS
GREENVILLE, S. C.

300, B 48171801